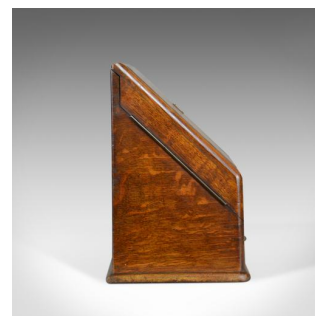


## Antique Stationery Cabinet, English, Victorian, Oak, Correspondence Chest c.1900



### DESCRIPTION

Our Stock # 18.5625

This is an antique stationery cabinet, an English, Victorian, oak correspondence chest dating to the turn of the last century, circa 1900.

- Attractive medullary rays in the grain detail of the oak
- Good consistent colour in a wax polished finish
- Period piece with desirable aged patina
- The canted doors dressed with brass escutcheon, lock present, key absent
- Open on quality hinging to reveal stationery bureau beneath
- Offering envelope and paper divisions and brass stays to the doors
- A removable pen tray with storage beneath
- Removing the brass pin unlocks the lower drawer
- Drawer dressed with a drop handle on pierced brass back plate

A super little antique stationery cabinet. Solid joints and construction, delivered waxed, polished and ready for the home.

Search [London Fine for #18.5625](#) , or scan the QR code for more photos and details

### DIMENSIONS

Max Width: 35.5cm (14")

Max Depth: 19.5cm (7.75")

Max Height: 30cm (11.75")

