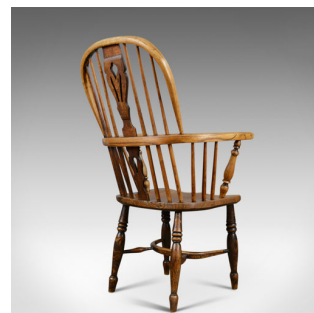
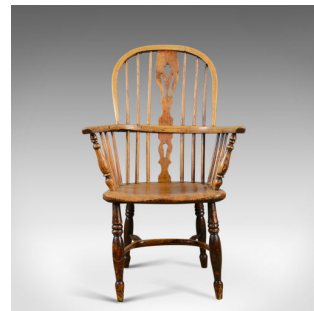


Antique Windsor Elbow Chair, Victorian Double Hoop Armchair, Elm, Ash c.1850



DESCRIPTION

Our Stock # 18.5591

This is an antique Windsor elbow chair, a Victorian, double hoop armchair in elm and ash and dating to circa the mid 19th century, circa 1850.

- Classic English, country, elbow chair
- Triple fret-cut back splat over key hole lower
- Raked, bentwood back bow with six spindles for comfort
- Bow armrest raised on oblique turned spindles
- Generous, elm, saddle seat slab displaying grain interest
- Raised on turned legs united by crinoline stretcher

A delightful antique Windsor elbow chair. Solid joints and construction, delivered waxed, polished and ready for the home.

Search [London Fine for #18.5591](#) , or scan the QR code for more photos and details

DIMENSIONS

Max Width: 64cm (25.25")
Max Depth: 55cm (21.75")
Max Height: 104cm (41")
Seat Width: 40cm (15.75")
Seat Depth: 35.5cm (14")
Seat Height: 41cm (16.25")

