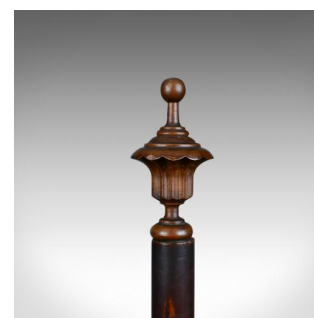


Antique Pole Screen, English, Regency, Fire Screen, Rosewood, Crewelwork
c.1820



DESCRIPTION

Our Stock # 18.5620

This is an antique pole screen, an English, Regency fire screen in rosewood with crewelwork, needlepoint panel dating to the early 19th century, circa 1820.

- Raised on a robust rosewood stand with good colour and grain interest
- A tripod of beautifully carved cabriole legs featuring carved knees and scrolled leaf toes
- An inverted finial beneath tapering, turned and carved post
- The post rising to urn and ball finial
- Adjustable height, crewelwork, circular tapestry screen
- Depicting a floral garland in a pastel palette
- Framed in a shaped, fretwork rosewood mount

A superior example of it's type. Solid and stable, delivered waxed, polished and ready for the home.

Search [London Fine for #18.5620](#) , or scan the QR code for more photos and details

DIMENSIONS

Max Width: 40.75cm (16")
Max Depth: 40.75cm (16")
Max Height: 144cm (56.75")

LIST PRICE

£945.00

