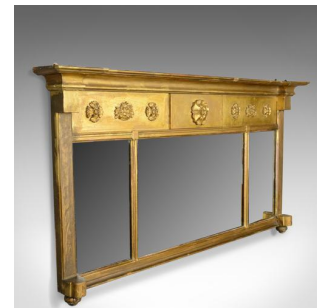


Antique Overmantel Mirror, English, Regency, Early 19th Century, Wall Circa 1820



DESCRIPTION

Our Stock # 18.5600

This is an Antique overmantel mirror. An English Regency, early 19th century, wall mirror for the hall or drawing room divided as with a triptych, circa 1820.

- Attractive, mellow golden tones in the giltwood frame
- A quality mirror from the Regency period
- Mid-sized and in good proportion
- Crown moulding over breakfront broad frieze
- Decorated with rosette appliqué
- Later mirror plate in good order, divided into three by vertical astragals

A fine example in good order throughout. Supplied with fixings ready to hang. Delivered ready for the home.

Search [London Fine for #18.5600](#) , or scan the QR code for more photos and details

DIMENSIONS

Max Width: 127.5cm (50.25")

Max Depth: 11.5cm (4.5")

Max Height: 64cm (25.25")

