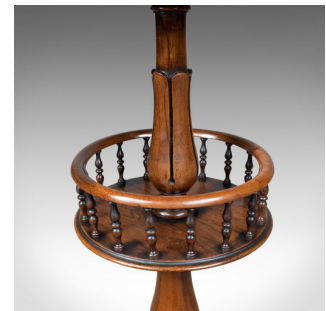
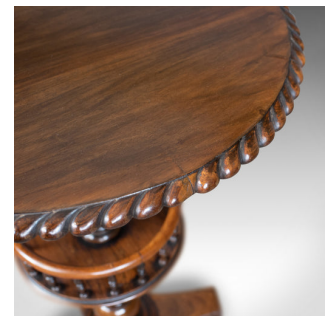


Antique Side Table, English, Victorian, Rosewood, Walnut, Occasional, Circa 1860



DESCRIPTION

Our Stock # 18.5500

This is an antique side table, an English, Victorian, rosewood and walnut, two tier, occasional table with nautical overtones dating to the mid 19th century, circa 1860.

- Of superior quality in select rosewood and walnut
- Displaying grain interest throughout
- Warm tones in the wax polished finish with a desirable aged patina
- The circular top displays well
- Finished with a gadrooned edge moulding
- The spindle galleried lower tier offering useful storage
-

Fine stem with 'lazy crow's nest' gallery at the mid-point

- Anchored in a ring turned collar
- Standing upon a hyperboloid platform over bun feet

Search [London Fine for #18.5500](#) , or scan the QR code for more photos and details

DIMENSIONS

Max Width: 49cm (19.25")

Max Depth: 49cm (19.25")

Max Height: 73cm (28.75")

