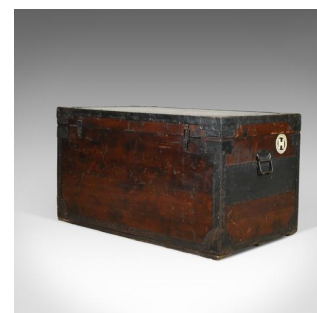
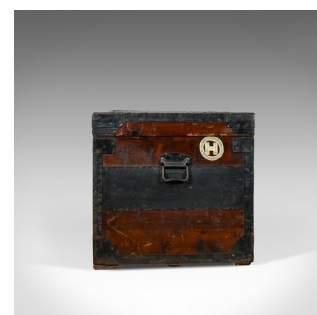




Antique Steamer Trunk, Large, English, Pine, Metal Lined, Chest, Edwardian c1910



DESCRIPTION

Our Stock # 18.5411

This is an antique steamer trunk, a large, English, dark stained pine, metal lined, chest dating to the Edwardian era, circa 1910.

- Attractive dark stained pine, metal bound steamer trunk
- In good order and original condition, displaying a desirable aged patina
- Metal lined and retaining the maker's badge – "Burne" British Manufacture'
- Of large proportions and offering voluminous storage within
- Carrying handles to each end and the original working locks and key
- Tagged with the name and initials of H.C. Hainworth

Plenty of interest and charm in this antique steamer trunk. Solid joints and construction, delivered waxed, polished and ready for the home.

Search [London Fine for #18.5411](#) , or scan the QR code for more photos and details

DIMENSIONS

Max Width: 99cm (39")

Max Depth: 56cm (22")

Max Height: 53.5cm (21")

