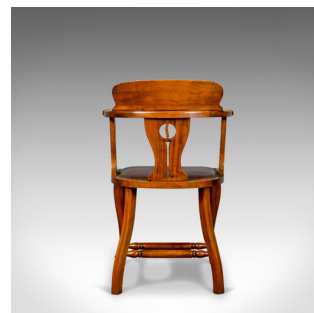
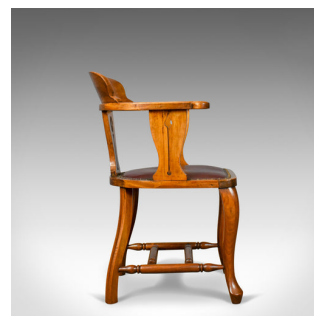


Antique Bow-Back Armchair, Edwardian, Art Nouveau, Liberty-esque, Walnut c.1910



DESCRIPTION

Our Stock # 18.5414

This is an antique bow-back armchair, an English, Edwardian, Art Nouveau, Liberty-esque walnut, 'smokers', or 'captains', chair dating to circa 1910.

- An appealing country kitchen, bow back armchair
- Delightful colour to the walnut in a wax polished finish
- Displaying Liberty-esque, Art Nouveau overtones
- Pierced decoration to the arm supports and back splat
- Attractive armrests terminate in rounded grips
- Deep, shaped crest rail for added back support
- Claret leather covered seat pad with a studded finish
- Raised on stout turned legs united by double 'H' stretcher

Perfect as a desk or study chair, solid and stable offering a comfortable seat. Solid joints and construction, delivered waxed, polished and ready for the home.

Search [London Fine for #18.5414](#) , or scan the QR code for more photos and details

DIMENSIONS

Max Width: 61cm (24")
Max Depth: 51cm (20")
Max Height: 86cm (33.75")
Seat Width: 44cm (17.25")
Seat Depth: 46cm (18")
Seat Height: 47cm (18.5")

