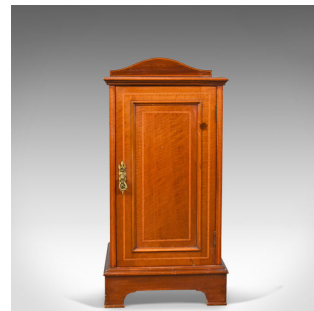


Antique Pot Cupboard, English, Edwardian, Walnut, Bedside Cabinet, Circa 1910



DESCRIPTION

Our Stock # 18.5380

This is an antique pot cupboard, an English, Edwardian, Walnut bedside cabinet dating to the early 20th century, circa 1910.

- Good colour to the English walnut
- Grain interest shows in the lustrous wax polished finish
- Of quality craftsmanship with a desirable aged patina
- Raised upon an arched plinth base dressed with quality mouldings
- The top displays well and is backed by a modest humped up-stand
- The field panel door dressed with a brass loop handle over pierced backplate
- The top, up-stand and front decorated with feather banding inlay
- Inside divided by a single shelf offering useful storage

A fine antique pot cupboard with solid joints and construction. Delivered waxed, polished and ready for the home.

Search [London Fine for #18.5380](#) , or scan the QR code for more photos and details

DIMENSIONS

Max Width: 41.5cm (16.25")

Max Depth: 36.5cm (14.25")

Max Height: 84.5cm (33.25")

