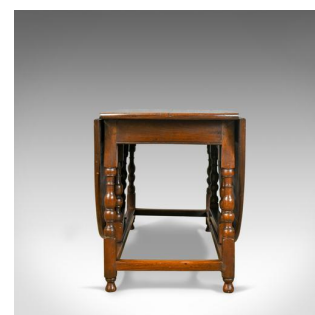


Large Antique Gateleg Table, Georgian, Country Kitchen, Dining, Circa 1800



DESCRIPTION

Our Stock # 18.5373

This is a large antique gateleg table, an English, Georgian country kitchen dining table dating to c.1800.

- Crafted from generously thick English oak
- Displaying grain interest and wisps of medullary rays
- Beautifully aged patina consistent with over 200 years of use
- Riding on baluster turned legs united by robust stretchers
- The gatelegs offer a stable and comfortable surface when extended
- Seating for up to six comfortably or eight intimately

Superb period charm and in good antique order, this large antique gate leg table is delivered waxed and polished ready for the home.

Search [London Fine for #18.5373](#) , or scan the QR code for more photos and details

DIMENSIONS

Min Width: 60cm (23.5")
 Max Width: 175cm (69")
 Max Depth: 151cm (59.5")
 Max Height: 73cm (28.75")

