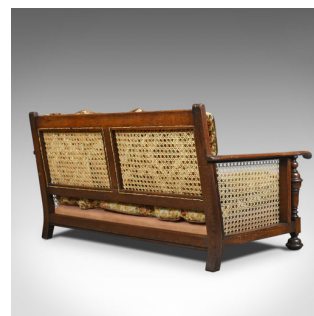
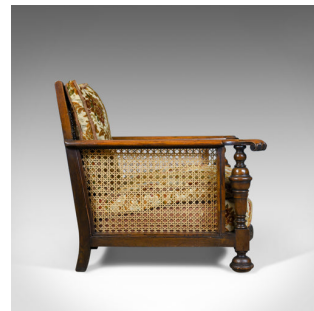


## Antique Conservatory Suite, Oak, Bergere, Three Seater Sofa, c.1910



## DESCRIPTION

Our Stock # 10.1742

This is a classic antique sofa in oak, A Bergere sofa dating to the Edwardian period of the early 20th century, circa 1910.

- Beautifully crafted in oak with good colour and graining
- Raised on magnificent stout turned legs to the front
- Appealing carved guilloche seat rail
- Crest rail beautifully carved with fruiting vines
- Deep seat enclosed with caning in good condition
- Long arm rests terminate in attractive oblique, carved grips
- Traditionally sprung stuff-over seat panels with brocade trim
- Feather filled loose cushions in good order
- Finished in a damask cloth in earthy pastel tones

An attractive and comfortable sofa in good condition, solid joints and construction delivered waxed, polished and ready for the home.

Search [London Fine for #10.1742](#) , or scan the QR code for more photos and details

## DIMENSIONS

Max Width: 154cm (60.75")

Max Depth: 84cm (33")

Max Height: 78cm (30.75")

Seat Width: 130cm (51.25")

Seat Depth: 53cm (20.75")

Seat Height: 38cm (15")

