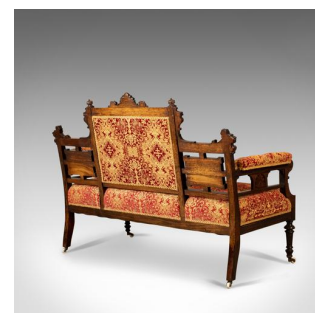
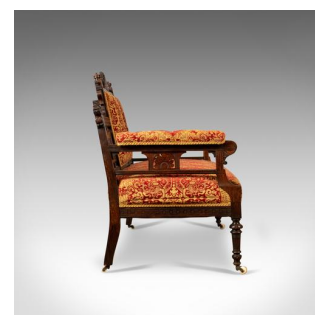


Antique Settee, Victorian Button Back Sofa, Walnut, 19th Century Circa 1880



DESCRIPTION

Our Stock # 18.5375

This is an antique settee, a Victorian button back sofa in walnut and finished in a rich damask cloth, 19th century circa 1880.

- The walnut frame displays good colour throughout
- Decorated with good quality carved detail with classical overtones
- Raised on turned and tapered front legs
- Swept, square section rear legs and all riding upon ceramic castors
- The button-back panel flanked by foliate carved side panels
- The crest rail, ears and rails adorned with scroll and foliate carving
- Well sprung and traditionally stuffed offering a comfortable seat
- Finished in a rich damask cloth and matching brocade trim

A fine antique settee featuring a show back: Ideal for centre room placement. Solid joints and construction, delivered waxed, polished and ready for the home.

Search [London Fine for #18.5375](#) , or scan the QR code for more photos and details

DIMENSIONS

Max Width: 120cm (47.25")

Max Depth: 61cm (24")

Max Height: 89cm (35")

Seat Width: 111cm (43.75")

Seat Depth: 53.5cm (21")

Seat Height: 40.75cm (16")

