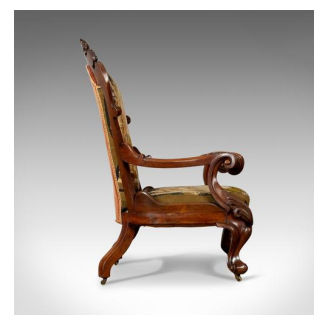
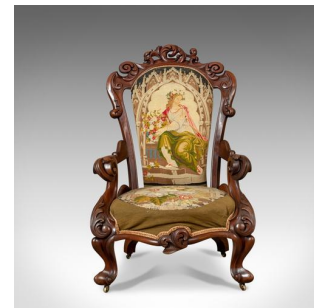


## Antique Armchair, 19th Century, Victorian, Chair, Walnut, Needlepoint Circa 1850



### DESCRIPTION

Our Stock # 18.5371

This is an antique armchair, a 19th century, early Victorian chair in walnut with a needlepoint tapestry seat cover dating to c.1850.

- The walnut displaying good, deep colour and grain interest
- Raised upon well formed cabriole legs with bump knee and toe
- Swept square section legs to the rear and riding upon brass castors all round
- Elaborately pierced carved crest rail of foliate and scroll detail
- The exuberance continued in the magnificent armrest terminals
- Professionally upholstered in a needlepoint cloth with brocade trim
- A soft pastel palette displaying classical scenes and floral detail
- Stuff over to a serpentine seat rail and padded back
- Traditionally stuffed with a show back; Ideal for centre room placement
- Some light wear to the seat centre consistent with careful use

Search [London Fine for #18.5371](#) , or scan the QR code for more photos and details

### DIMENSIONS

Max Width: 64cm (25.25")  
 Max Depth: 68.5cm (27")  
 Max Height: 110cm (43.25")  
 Seat Width: 47cm (18.5")  
 Seat Depth: 51cm (20")  
 Seat Height: 38cm (15")

