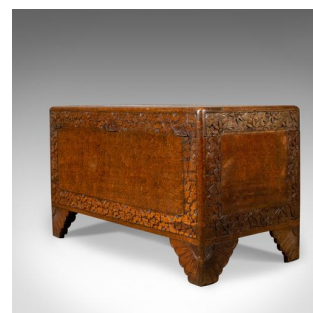
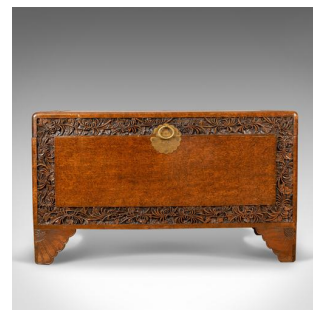


## Camphor Wood Trunk, Oriental, Carved, Chest, Art Deco, Circa 1940



### DESCRIPTION

Our Stock # 18.5325

This is a camphor wood trunk, an oriental, carved chest dating to the late Art Deco period, circa 1940.

- Of quality craftsmanship and stock
- Attractive grain interest in warm russet hues
- Solidly constructed with brass handle and etched back plate
- Expertly carved foliate bands framing each panel
- Standing upon classic, shaped bracket feet all round
- The top displays well with the lid lifting on quality hinges
- Offering voluminous storage within with a removable, pierced carved tray

An appealing camphor wood trunk with solid joints and construction. Delivered waxed, polished and ready for the home.

Search [London Fine for #18.5325](#), or scan the QR code for more photos and details

### DIMENSIONS

Max Width: 101cm (39.75")

Max Depth: 51cm (20")

Max Height: 58cm (22.75")

