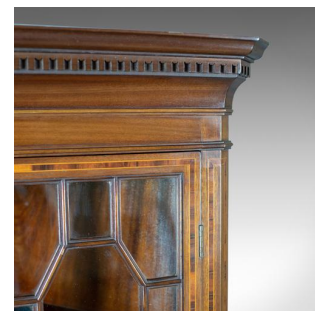
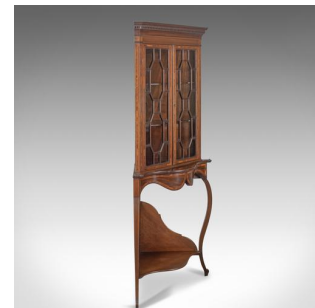


Antique Display Cabinet on Stand, English, Edwardian, Glazed, Mahogany, Corner



DESCRIPTION

Our Stock # 18.5250

This is an antique display cabinet on stand, an English, Edwardian, glazed, mahogany, corner cabinet dating to circa 1910.

- Beautifully presented in select mahogany and of good proportion
- Accentuated by crossbanded decoration framed in boxwood stringing
- Good colour throughout displaying a desirable aged patina
- The crown moulding featuring dentil strip and frieze
- A pair of 15 pane, astragal glazed cabinet doors
- Lock and key present but non-functioning
- Inside a pair of serpentine fronted shelves divide the space (25cm between shelves)
- The cabinet usefully raised on a sinuous stand
- A shaped platform dressed with scroll edge moulding over apron
- Slender cabriole legs united by a shaped lower tier with upstands

Search [London Fine for #18.5250](#) , or scan the QR code for more photos and details

DIMENSIONS

Max Width: 70cm (27.5")

Max Depth: 46cm (18")

Max Height: 172.75cm (68")

