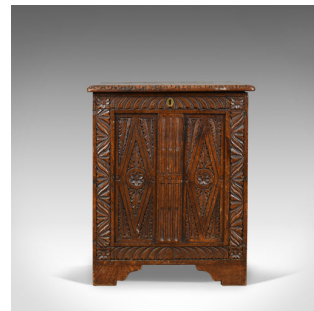


Antique Coffe, English, Oak, Chest, Victorian in Jacobean Taste, Circa 1880



DESCRIPTION

Our Stock # 18.5300

This is an antique coffer, an English oak chest, Victorian in the Jacobean taste, dating to the late 19th century circa 1880.

- Delightful biscuit hues to the English oak
- Grain interest and a desirable aged patina
- Profusely carved and presenting well
- Unusual half-width chest, well executed and in good proportion
- Twin panel front decorated with floral and foliate lozenges
- Rails and muntins and side panels also displaying carved interest
- Raised on shaped bracket feet all round
- The top displaying well with carved edge moulding
- Lifts on quality hinging to reveal voluminous storage within

Rare to find in such proportions. Solid joints and construction, delivered waxed, polished and ready for the home.

Search [London Fine for #18.5300](#), or scan the QR code for more photos and details

DIMENSIONS

Max Width: 50cm (19.75")

Max Depth: 49cm (19.25")

Max Height: 61cm (24")

