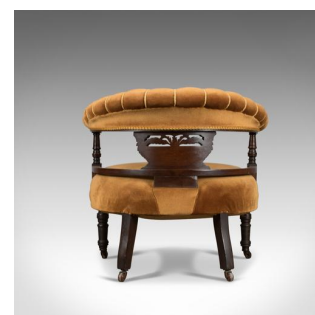


Pair of Antique Salon Chairs, English, Victorian, Bedroom, Armchair, Classical



DESCRIPTION

Our Stock # 18.5256

This is a pair of antique salon chairs, English, Victorian bedroom armchairs displaying classical overtones and dating to circa 1860.

- Sumptuous broad and plump comfortable seats
- Well sprung and traditionally stuffed
- Finished in a golden velour cloth in good order
- Turned walnut frames displaying good colour
- Horseshoe armrests, padded with a roped finish
- Ring turned supports, inlaid decoration, capped with mushroom finials
- Broad, pierced back splat displaying inlaid classical urn and garlands

A fine pair of antique salon chairs with solid joints and construction. Delivered waxed, polished and ready for the home.

Search [London Fine for #18.5256](#) , or scan the QR code for more photos and details

DIMENSIONS

- Max Width: 70cm (27.5")
- Max Depth: 65cm (25.5")
- Max Height: 64cm (25.25")
- Seat Width: 55cm (21.75")
- Seat Depth: 55cm (21.75")
- Seat Height: 38cm (15")

