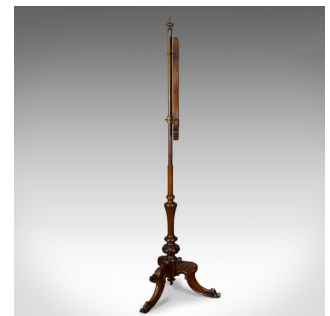


Antique Pole Screen, English, Victorian, Fire, Needlepoint, Tapestry Circa 1850



DESCRIPTION

Our Stock # 18.5128

This is an antique pole screen, an English, early Victorian fire screen with needlepoint tapestry panel dating to circa 1850.

- Raised on a turned mahogany stand with good colour and grain interest
- A tripod of cabriole legs featuring carved 'C' scrolls, acanthus leaf knees and scrolled toes
- An inverted finial beneath to finish
- An expertly turned post rises to a capping finial
- The adjustable screen panel easy to position
- A scrolled frame mounts the needlepoint tapestry of exotic birds, branches and flowers

A fine example of it's type. Solid and stable, delivered waxed, polished and ready for the home.

Search [London Fine for #18.5128](#) , or scan the QR code for more photos and details

DIMENSIONS

Max Width: 53cm (20.75")
 Max Depth: 53cm (20.75")
 Max Height: 160cm (63")
 Panel Width: 49cm (19.25")
 Panel Depth: 57cm (22.5")

LIST PRICE

£845.00

