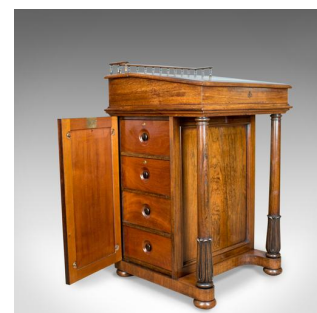
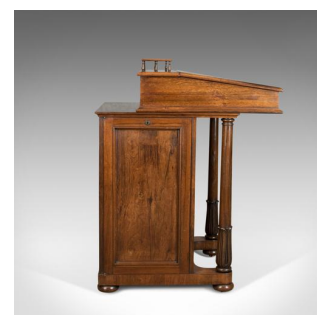
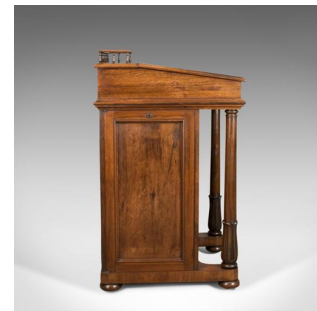


Antique Davenport, Burrey & White, Rosewood, Desk, William IV, Circa 1835



DESCRIPTION

Our Stock # 18.5025

This is an antique Davenport from the prestigious cabinet maker's Burrey & White of Shrewsbury. A rosewood desk dating to the early 19th century during the reign of William IV, circa 1835.

- A superior piece presented in excellent condition
- Delightful colour and grain interest to the select rosewood
- Cabinetry by Burrey & White, fitted with Bramah locks, keys absent
- Galleried desktop slides forward for additional knee space
- Finished with a twin tooled, olive skiver
- Raised on turned and tapered pillars rising from carved bell flowers
- Standing upon bun feet over hidden brass castors
- The fall hinges beautifully with a built in brass, multi-point stay
- Inside, a pair of stationery drawers over a pair of faux drawers
- Burr maple fonts with ash linings and dressed with ebony pulls
- The lower right hand pull acts as a concealed locking pin

Search [London Fine for #18.5025](#) , or scan the QR code for more photos and details

DIMENSIONS

Max Width: 53.5cm (21")

Max Depth: 54cm (21.25")

Max Height: 89.5cm (35.25")

