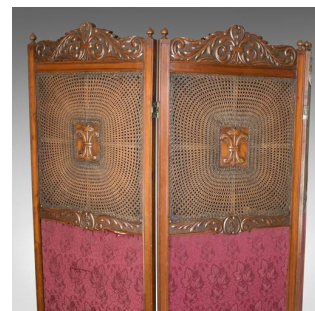


Antique Folding Screen, Edwardian Room Divider, Photographer's Prop Circa 1910



DESCRIPTION

Our Stock # 10.1787

This is an antique folding screen, an Edwardian three panel screen. An English room divider perfect as a photographer's prop, dating to c.1910.

- Front side displaying a superb, original, cane work panel around carved bushel plaque
- Framed in mahogany, classically carved, featuring 'C' scrolls and acanthus leaves
- The lower part of the panel finished in a striking, purple, woven silk with foliate detail
- Desirable aged patina and of quality craftsmanship
- Original double swing hinges and posts capped with turned finials
- Rear panel somewhat distressed finished in patterned fabric
- Fairly minor tear to one of the front silk panels, does not detract

A piece of immense interest delivered ready for use. Solid joints and construction, delivered waxed, polished and ready for the home.

Search [London Fine for #10.1787](#) , or scan the QR code for more photos and details

DIMENSIONS

- Each Panel:
- Max Width: 55cm (21.75")
 - Max Depth: 2.5cm (1")
 - Max Height: 186cm (73.25")
 - Max Open Width: 165cm (65")

