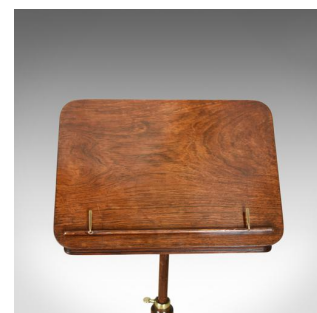
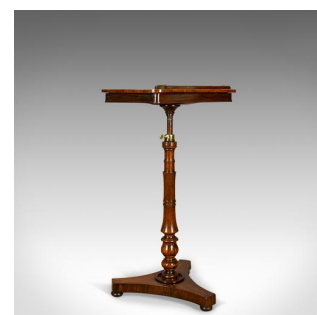
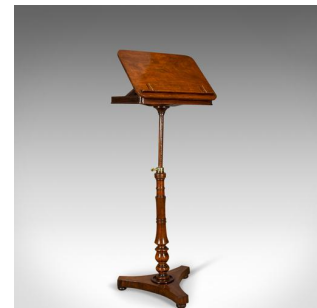


Antique Music Stand, English, Regency, Adjustable, Rosewood, Lectern Circa 1820



DESCRIPTION

Our Stock # 18.5164

This is an antique music stand, an English, Regency adjustable, rosewood lectern dating to circa 1820.

- Delightful colour and tone to the rosewood
- Well figured, displaying grain interest with a desirable aged patina
- Fully adjustable height and fall angle
- Top with lipped book rest and swivel brass stays
- Tilts on ratcheted adjuster to required angle
- Brass thumb screw holds pillar to desired height
- Attractive turned stem rising from hyperboloid platform
- Standing upon three, low profile, bun feet

A fine example of a period Regency music stand. Solid joints and construction. Delivered waxed, polished and ready for the home.

Search [London Fine for #18.5164](#) , or scan the QR code for more photos and details

DIMENSIONS

Max Width: 47cm (18.5")

Max Depth: 33cm (13")

Min Height: 76.5cm (30")

Max Height: 105cm (41.25")

