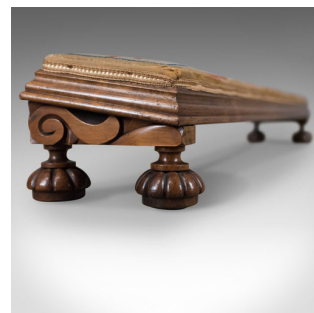


## Antique Carriage Stool, Long Victorian Footrest, English, Walnut, Circa 1850



### DESCRIPTION

Our Stock # LFA-1807

This is an antique carriage stool, a long, early Victorian footrest in English walnut and dating to the mid 19th century, circa 1850.

- Solid walnut, displays well with a wax polished finish
- In biscuit hues, grain interest with a desirable aged patina
  - Traditionally stuffed beneath a needlepoint tapestry cloth, would benefit from recovering
- Canted for comfort and broad enough to share
- Raised on delightful gadrooned feet beneath scrolled carved block

A super example with solid joints and construction. Delivered waxed, polished and ready for the home.

Search [London Fine for #10.1807](#) , or scan the QR code for more photos and details

### DIMENSIONS

Max Width: 112cm (44")  
Max Depth: 21.5cm (8.5")  
Max Height: 17cm (6.75")

