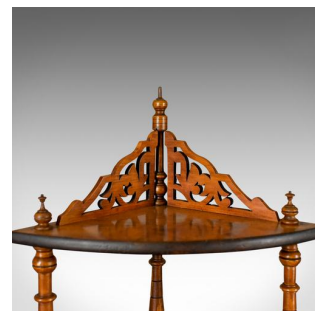
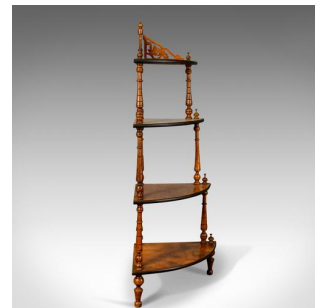


## Antique Whatnot, English, Burr Walnut, Four Tier Corner Display Stand Circa 1880



### DESCRIPTION

Our Stock # 18.5140

This is an antique whatnot, an English, Victorian, burr walnut, four tier, corner display stand dating the late 19th century circa 1880.

- Attractive, well figured, burr walnut, graduated shelves
- Subtly rounded edge profiles with an ebonised finish
- Good colour throughout with a desirable aged patina
- Standing upon turned feet
- Shelves raised on tapering, ring turned spindles
- Capped with mushroom finials
- Top shelf featuring a pierced fret gallery

An appealing example offering a stable display space. Solid joints and construction, delivered waxed, polished and ready for the home.

Search [London Fine for #18.5140](#) , or scan the QR code for more photos and details

### DIMENSIONS

Max Width: 66cm (26")

Max Depth: 40.75cm (16")

Max Height: 135cm (53.25")

Bottom Shelf Height: 30.5cm (12")

Lower Shelf Height: 33cm (13")

Upper Shelf Height: 28cm (11")

