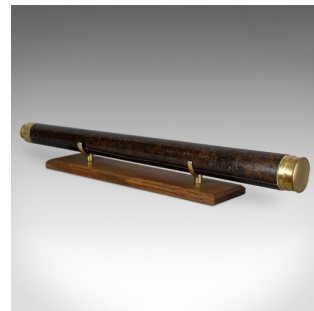


## Antique Telescope, Single Draw Terrestrial Refractor, Dollond London Circa 1800



### DESCRIPTION

Our Stock # 18.5074

This is an antique telescope, a single draw refractor for terrestrial or astronomical use. An English Georgian piece dating to circa 1800.

Perfect for bird watching, landscape appreciation, wildlife, or maritime observation. Equally suitable for observing the night sky. Supplied ready to enjoy; Fully inspected and lenses cleaned by our in-house restorer.

- Presenting a clear, sharp optical performance
- Tapered, leather primary barrel
- Single, brass, segmented draw tube in good order
- 38mm, 1.5" objective lens
- Lens cap and swivel dust cover to flared eye cup
- Supplied with an London Fine oak and brass 'Captain's Stand' for display

Engraved 'Dollond London', an historic, period piece as good to use today as it was two hundred years ago.

Search [London Fine for #18.5074](#) , or scan the QR code for more photos and details

### DIMENSIONS

Max Drawn Length: 78.5cm (31")

Closed Length: 64.5cm (25.5")

Objective Glass Diameter: 38mm (1.5")

Find out more about Dollond of London here...

