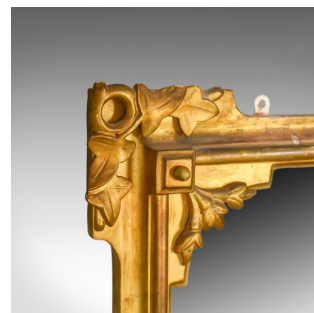
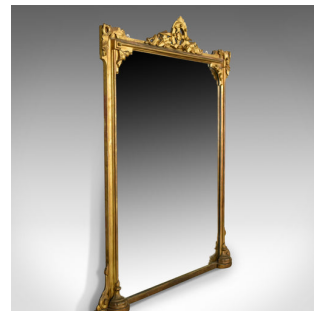


Antique Overmantel Mirror, English Victorian, Wall Giltwood and Gesso Circa 1850



DESCRIPTION

Our Stock # 10.1786

This is an antique overmantel mirror, an English, Victorian wall mirror in giltwood and gesso frame dating to circa 1850.

- Attractive golden tones in the giltwood frame
- A refined piece displaying nautical overtones
- The crest a rosette in compass with chain and foliate mount
- Hand-carved wood bracketing to the lower flanks
- Displaying ivy leaf foliate mounts to the moulded frame
- Standing upon half-round feet and supplied with fittings ready to mount

An interesting example to dress any mantelpiece. Solid joints and construction, delivered ready for the home.

Search [London Fine for #10.1786](#) , or scan the QR code for more photos and details

DIMENSIONS

Max Width: 118cm (46.5")

Max Depth: 7cm (2.75")

Max Height: 148cm (58.25")

