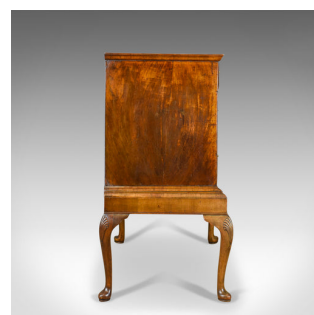


Antique Chest of Drawers on Stand, English, Walnut, Queen Anne, Circa 1700



DESCRIPTION

Our Stock # 18.5008

This is an antique chest of drawers on stand, an English, walnut, Queen Anne piece dating to the early 18th century, circa 1700.

- Sumptuous biscuit colour and grain interest throughout
- Desirable aged patina in the wax polished finish
- Arranged '2 over 2' graduated in depth
- Cross banded top with ovular, boxwood string decoration
- Moulded edge detail with plain sides
- Mounted on a sympathetic stand with cabriole legs, carved fan knees and pad feet
- Drawer fronts decorated with arced string detail
- Dressed with solid brass, swan neck handles over batwing back plates
- Shaped brass keyhole escutcheons over original iron locks, key absent

An attractive piece that displays very well. Solid joints and construction, delivered waxed, polished and ready for the home.

Search [London Fine for #18.5008](#) , or scan the QR code for more photos and details

DIMENSIONS

Max Width: 90cm (35.5")

Max Depth: 61cm (24")

Max Height: 110cm (43.25")

