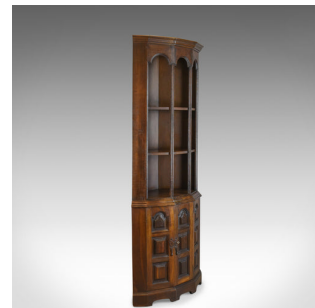


Pair Of Tall, Mid 20th Century Corner Cabinets, Gothic Taste, English, Oak



DESCRIPTION

Our Stock # 11.3459

This is a pair of tall, mid 20th century corner cabinets in the gothic taste. Crafted in English oak.

- Rich, dark wax polished finish to the English oak
- Presented in very good order throughout
- Complete with working lock and key
- Raised on open bracketed feet
- Cupboard doors featuring nine chamfered field panels
- A pair of doors open to reveal a single shelf dividing the space within
- Open display space above for ornaments or books
- Divided into three by a pair of shelves
 - Attractive, large mouldings run vertically up to the arched pelmet with crown moulding over

A super pair of cabinets, larger than most. Solid joints and construction, delivered waxed, polished and ready for the home.

Search [London Fine for #11.3459](#), or scan the QR code for more photos and details

DIMENSIONS

Max Width: 88cm (34.75")

Max Depth: 46cm (18")

Max Height: 215cm (84.75")

