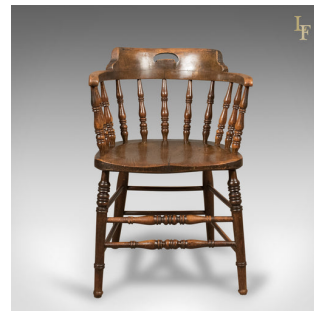


## Victorian Antique Bow-Back Chair, English Elm Windsor c.1870



## DESCRIPTION

Our Stock # 12.1553

This is a Victorian, antique, low bow-back chair, sometimes referred to as a 'Smokers' or 'Captain's' chair. An English elm Windsor piece from the mid 19th century c.1870.

- Attractive deep, rich tones to the elm with a desirable aged patina
- Displaying good grain detail in the shaped seat slab
- Ring turned front legs and stretchers
- Flared, circular section rear legs
- Double box stretchered for added strength and stability
- Ring turned spindles rise obliquely to the horseshoe armrest
- Crowned with the aesthetically pleasing scroll back featuring a 'butler's grasp'

An inviting piece of English country furniture. Solid joints and construction. Delivered waxed, polished and ready for the home.

Search [London Fine for #12.1553](#), or scan the QR code for more photos and details

## DIMENSIONS

Max Width: 54cm (21.25")  
Max Depth: 51cm (20")  
Max Height: 78cm (30.75")  
Seat Width: 43.25cm (17")  
Seat Depth: 43.25cm (17")  
Seat Height: 45cm (17.75")

