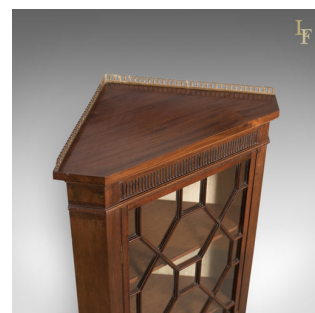
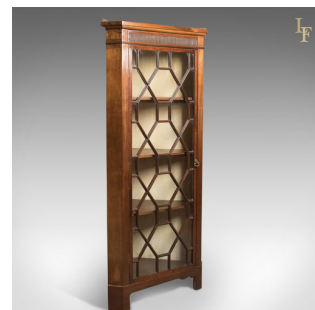


Edwardian Antique Glazed Display Corner Cabinet, English c.1910



DESCRIPTION

Our Stock # LFA-1545 This is an Edwardian antique glazed display corner cabinet, English dating to c.1910. • Standing just under 5 feet tall this delightful cabinet is in first class order • In mahogany with a deep rich lustre in the wax polished finish • Of good proportion raised on shaped bracket feet • Pierced brass gallery in the form of reciprocating urns to a top in fine order • Generous edge moulding down into fluted decoration to the frieze and lower moulding • Plain canted corners display grain interest and frame the cabinet • Intricate, 37 pane astragal glazed door featuring solid brass handle to twist lock • Door opens wide on triple quality brass hinges to reveal silk cotton lined interior • Three shelves divide the space with shelf depths of 27cm (top) 2 x 29.5cm (middle) and 36cm (bottom) A good quality, 3/4 height cabinet that doesn't dominate. Solid joints and construction, delivered waxed, polished and ready for the home.

Search [London Fine](#) for #LFA-1545 or scan the QR code for more photos and details

DIMENSIONS

Max Width: 72cm (28.25")
 Max Depth: 44cm (17.25")
 Max Height: 151cm (59.5")

