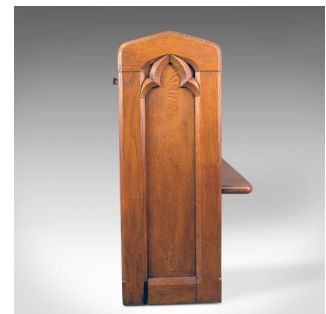


Antique Pew, English, Oak, Church Bench, Pugin-esque Gothic Overtones Circa 1880



DESCRIPTION

Our Stock # 18.5104

This is an antique pew, an English, oak, Victorian church bench with Pugin-esque gothic overtones dating to circa 1880.

- Attractive honey tones to the English oak with a desirable aged patina
- Displaying grain interest through the wax polished finish
- Ecclesiastical and gothic overtones
- Solid and stable, raised on four feet
- United by twin stretchers – ideal as a shoe rack
- End panels featuring carved gothic arch detail
- Bull nose edge profile to long seat, room enough for six
- Triple field panel back rest, raked for comfort
- Book rests and rack to rear

Making for a great kitchen dining, boot room or hall bench. Solid joints and construction, delivered waxed, polished and ready for the home.

Search [London Fine for #18.5104](#) , or scan the QR code for more photos and details

DIMENSIONS

Max Width: 266.5cm (105")
 Max Depth: 48.25cm (19")
 Max Height: 93cm (36.5")
 Seat Width: 260cm (102.25")
 Seat Depth: 30cm (11.75")
 Seat Height: 41cm (16.25")

