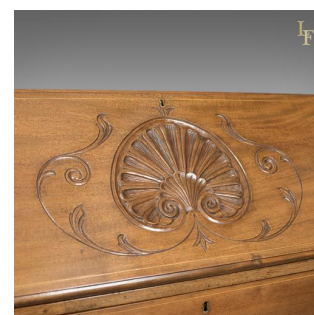




## Antique Bureau, Victorian Walnut Desk, c.1900



### DESCRIPTION

Our Stock # LFA-1637 This is a handsome antique bureau, a Victorian walnut desk, English c.1900. • Attractive pale walnut displaying exposed dovetails to the top • Raised on squat cabriole legs with carved knees and talon and ball feet • Roped lower moulding, canted corners with stop ended chamfers • Four dovetailed, graduated drawers with boxwood string detail • Dressed with pressed brass back-plates, drop handles and brass keyhole linings • A pair of lopers decorated with stringing and brass pulls • Locking fall decorated with carved stylised fan and foliate frame • Generous desk space backed by a central cupboard flanked by 3 cubbies over a pair of waterfall drawers each side • The fall key also locking the central cupboard decorated with classical vase inlay • Cupboard encloses a removable pair of drawers beneath two cubbies • Removing above reveals a pair of secret drawers with leather pulls and a shelf • Also provides access to the push locks to the pair of vertical document drawers A quality piece for any location with solid joints and construction. Delivered waxed, polished and ready for the home.

Search [London Fine for #LFA-1637](#) or scan the QR code for more photos and details

### DIMENSIONS

Max Width: 106cm (41.75")  
Max Depth: 53cm (20.75")  
Max Height: 111cm (43.75") Desk Width: 96cm (37.75")  
Desk Depth: 61cm (24")  
Desk Height: 82cm (32.25") Please see these short videos of the drawers and locks, [click here](#)

