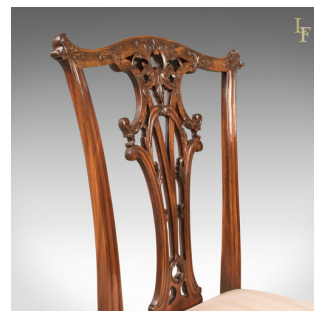


Set of 12 Dining Chairs, 20th Century Chippendale Revival



DESCRIPTION

Our Stock # LFA-1614

This is a fine set of 12 dining chairs from the late 20th century in the Chippendale taste.

- Traditionally crafted in mahogany with good colour
- Well executed, classic Chippendale styling
- Ten chairs plus two carver armchairs
- Raised on cabriole legs with carved scrolls and acanthus leaf knees
- Beautifully carved talon and ball feet
- Swept rear legs and moulded edge detail to seat rails
- Drop-in seats finished with a serviceable cloth, easily recovered
- Flared rear stiles rising to serpentine crest rail and typical Chippendale ears
- Pierced back splat decorated with carved scrolls and foliate detail

A desirable set of chairs. Solid joints and construction, delivered waxed, polished and ready for the home.

Search [London Fine for #LFA-1614](#) or scan the QR code for more photos and details

DIMENSIONS

Carver:

Max Width: 66cm (26")
 Max Depth: 56cm (22")
 Max Height: 101.5cm (40")
 Seat Width: 46cm (18")
 Seat Depth: 41cm (16.25")
 Seat Height: 48.5cm (19")

Chair:

Max Width: 55cm (21.75")
 Max Depth: 55cm (21.75")
 Max Height: 102cm (40.25")
 Seat Width: 46cm (18")
 Seat Depth: 41cm (16.25")

