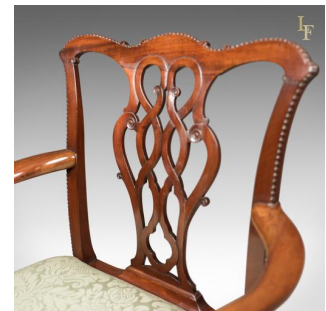


Antique Chair, Chippendale Influenced Carver Armchair, c.1800



DESCRIPTION

Our Stock # R0809 This is a desirable antique chair heavily influenced by the designs of Thomas Chippendale. A George III carver armchair dating to c.1800. • Crafted in select cuts of beautifully aged mahogany • Raised on square section legs, chamfered on the inner corners • Decorated with carved, beaded detail to the front outer corners • Gently flared stiles rising to serpentine crest rail • Classic Chippendale influenced ribbon back splat • Shaped arms sweep out to carved scrolled finish • Generous proportions with broad comfortable seat pad • Stuff over seat panel finished in a pale green damask cloth • Traditionally stuffed in good supportive order Stamped 'STOCKLEY' beneath the forward stretcher, this delightful chair is a welcome addition to any setting. Solid joints and construction, delivered waxed, polished and ready for the home. ãĒ

Search [London Fine for #R0809](#) , or scan the QR code for more photos and details

DIMENSIONS

Max Width: 74cm (29")
 Max Depth: 56cm (22")
 Max Height: 92cm (36.25")
 Seat Width: 56cm (22")
 Seat Depth: 50cm (19.5")
 Seat Height: 51cm (20")

