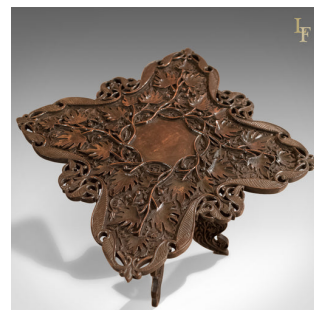


## Antique Campaign Side Table, Anglo-Indian c.1900



## DESCRIPTION

Our Stock # LFA-1521 This is a beautifully carved, Anglo-Indian, antique campaign table dating to the turn of the century c.1900. • Profusely carved in deep relief • Grape vine foliate detail • Pierced detailing to shaped edges and legs • Plain central cartouche • Four shaped legs offer stable platform • Dismantles into folding legs and slab top for easy campaign transportation • Solid teak construction, highly durable • Desirable deep chocolate tones and an aged patina A super example in fine order, delivered waxed, polished and ready for the home.

Search [London Fine for #LFA-1521](#) or scan the QR code for more photos and details

## DIMENSIONS

Max Width: 59cm (23.25")

Max Depth: 59cm (23.25")

Max Height: 56cm (22")

