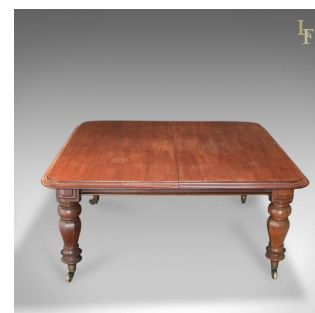




Large Antique Extending Dining Table, Victorian c.1870



DESCRIPTION

Our Stock # LFA-1500

This is a robust, antique extending dining table dating to the mid Victorian period c.1870.

- Seats up to 10 - 12 with two leaves supplied
- Potential to seat many more with with any suitable board added
- Riding on large and solid brass castors
- Sturdy Victorian turned baluster legs to each corner
- Well grained, choice Mahogany top with moulded edge
- Extends from a 5' table to a possible 14'
- Two extra leaves supplied offering 7'8", potential for many more
- One leaf with a nibble in the moulding, please see photographs

Delivered with solid joints and construction, please see all photographs.

Search [London Fine](#) for #LFA-1500 or scan the QR code for more photos and details

DIMENSIONS

Max Depth: 152cm (59.75")
Max Height: 72cm (28.25")
Without Leaves: 159cm (62.5")
With 1 Leaf: 197cm (77.5")
With 2 Leaves: 235cm (92")
Fully Extended: 426.75cm (14')

